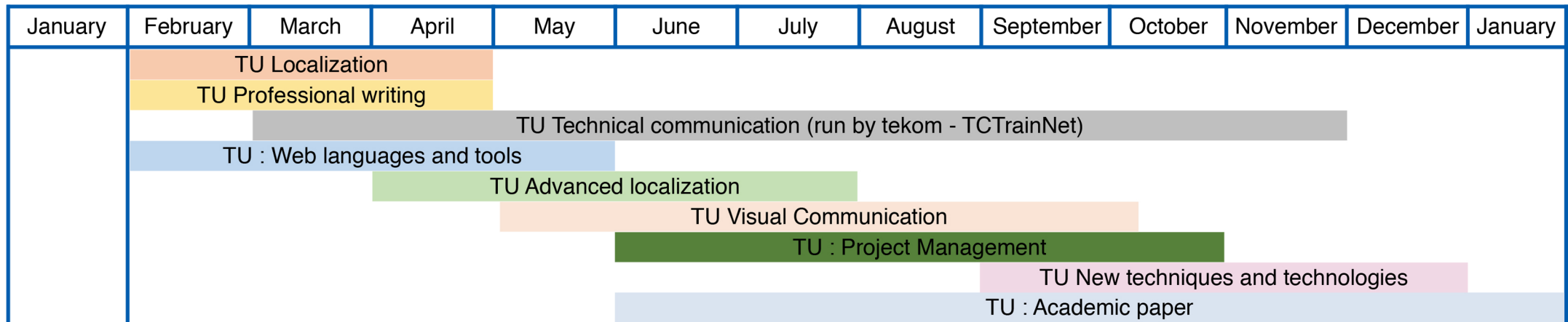
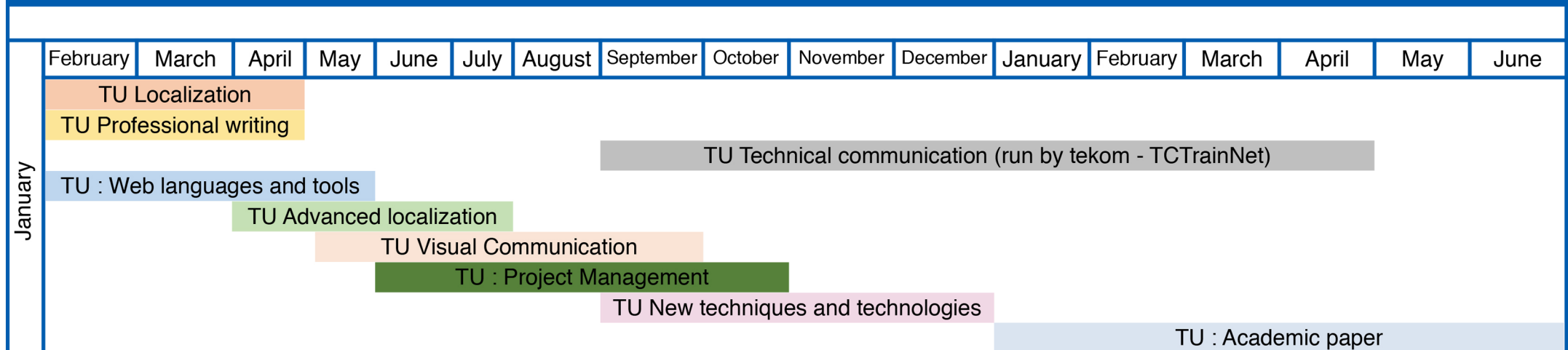


## We offer four study options:

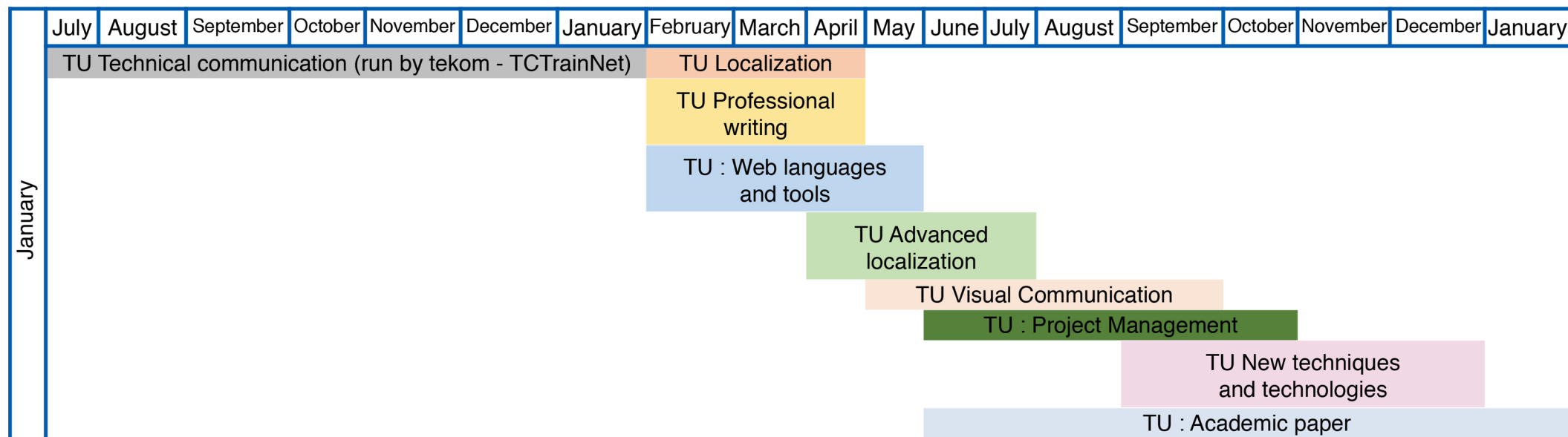
1/ accelerated option (12 months, course start end of January only)



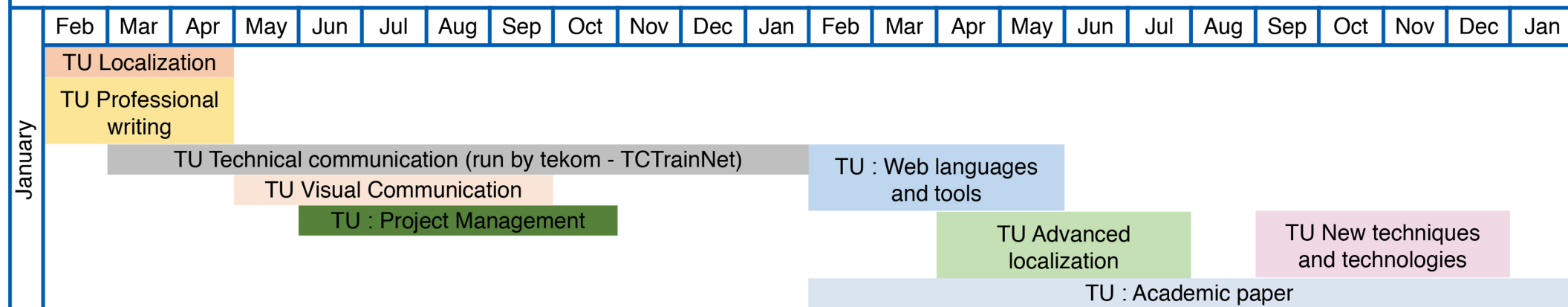
2/ semi- accelerated option A (end of January to June, 17 months)



### 3/ semi-accelerated option B (end of July to January, 17 months)



### 4/ extended option (24 months)



The fees for option 1/, 2/ and 3/ are roughly the same (about 5700 euros, please contact us for details)  
 The fees for option 4/ - extended option - are 7360 euros, to be confirmed for the academic years 2020 to 2022